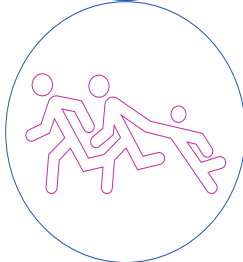


The Impact of the 2020–2022 Pandemic on World Society

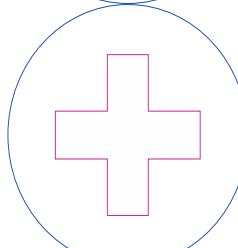
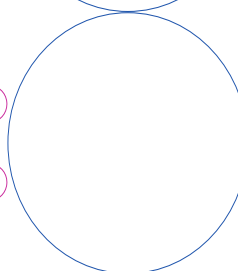
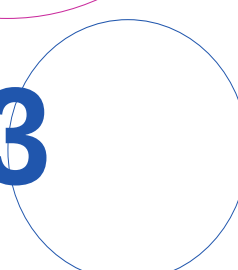
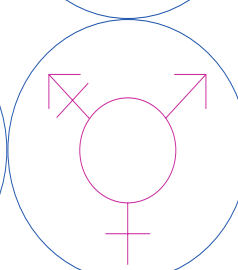
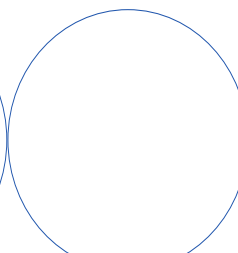
Melbourne Graduate School of Education, Australia

June 23–24, 2023



RC55

WORLD SOCIETY FOUNDATION



Welcome Note by the Conference Organisers

Dear conference participants, colleagues and friends.

Welcome to the international conference on *The Impact of the 2020–2022 Pandemic on World Society*. The conference, hosted by the Melbourne Graduate School of Education at the University of Melbourne, is co-organised by the *Research Committee 55* (RC55) on social indicators of the *International Sociological Association* (ISA) and the World Society Foundation (Zurich, Switzerland).

The idea to organise in Melbourne a pre-conference to the ISA World Congress of Sociology came up when the RC55 board looked for possibilities to support in person participation at the ISA World Congress for its committee members. The aim of this pre-conference is to bring together researchers from the Global North and the Global South and from different social sciences (sub)fields to discuss, debate and understand the impacts of the COVID-19 Pandemic on societies across the world as well as for world society as a whole. The participants of the conference have been selected from more than 50 abstract and paper submissions from 35 different countries. Travel grants have allowed researchers from 20 countries to participate in person. Due to health and/or travel restrictions, some participants will be joining us via Zoom.

The World Society Foundation, now in its fortieth year of activity as a “world observatory” on global change has supported social sciences scholars and scientific research all over the world to reinforce the investigation into the various processes of global integration, disintegration, (re)structuring, and (re)configuration. In doing so, the Foundation established in 2007 on the occasion of its 25th anniversary its conference sponsoring program. This conference is the 16th international conference on world society topics sponsored by the World Society Foundation.

The organization of an international two-day scientific conference is always a challenge and needs support of many people and institutions. We would like to thank the hardworking staff of the local conference office at the Melbourne Graduate School of Education for the organizational support, the reviewers who assisted in the reviewing and selection process of abstract and paper submissions, our colleagues, mostly from the RC55 board, for chairing sessions and discussing papers, the University of Melbourne for providing the conference venue and the necessary infrastructure, as well as the sponsors and partners of this conference for their generous financial support.

We are very much looking forward to meeting you in Melbourne and welcoming you to what promises to become a very inspiring conference.

Jenny Chesters, Sandra Fachelli, and Christian Suter

[the organising committee]

Conference Program

Thursday, June 22, 2023	
18:00	Welcome Reception (Foyer, level 2, 234 Queensberry St)
Friday, June 23, 2023	
08:45-09:30	Breakfast/Coffee/Tea and Registration (Foyer, level 2, 234 Queensberry St)
09:30-10:00	Opening and Welcome (Q227, level 2, 234 Queensberry St) Jenny Chesters (Melbourne Graduate School of Education, University of Melbourne) Jim Watterston (Dean, Melbourne Graduate School of Education, University of Melbourne) Christian Suter (President RC55, University of Neuchâtel)
10:00-11:00	Keynote: Managing Crisis After Financialisation: Reflecting on ‘Novel’ Responses to Covid-19 and the 2008 Financial Crisis <i>Chair:</i> Jenny Chesters (University of Melbourne) <i>Keynote Speaker:</i> Ben Spies-Butcher (Macquarie University, Sydney)
11:00-11:30	Coffee Break (Foyer, level 2, 234 Queensberry St)
11:30-12:30	Session 1: The Pandemic, Crisis Management and Policies, and their Impact (part 1) <i>Chair:</i> Sandra Fachelli (Pablo de Olavide University) <i>Speakers:</i> Sooahn Meier (University of Bremen): In the Eye of the Storm? OECD’s Crisis Leadership During the COVID-19 Pandemic in Health Governance Frank-Borge Wietzke (Barcelona Institute of International Studies/IBEI) and Diane Zovighian (IBEI and Sciences Po, Paris): Political Trust, Institutions and Insider-Outsider Perspectives Within Social Protection Systems During the Covid-19 Pandemic: The Case of Morocco <i>Discussant:</i> Christian Suter (University of Neuchâtel)
12:30-13:30	Lunch (Foyer, level 2, 234 Queensberry St)
13:30-15:30	Session 2: The Pandemic and its Impact on Subjective Well-Being and Life Satisfaction <i>Chair:</i> Masayuki Kanai (Senshu University) <i>Speakers:</i> Marc Callens and Dries Verlet (Ghent University, Belgium): The Impact of COVID-19 on Life Satisfaction: A Cross-National, Long Term Perspective Dabesaki Mac-Ikemenjima (University of the Witwatersrand, Johannesburg, and Ford Foundation, Lagos): How Do You Feel About Your Life These Days? The Effects of COVID-19 Lockdown on Subjective Well-Being in Nigeria Catherine White Berheide (Skidmore College), Megan A. Carpenter (St. Lawrence University), and David A. Cotter (Union College Schenectady): The Effect of the COVID-19 Pandemic on Faculty Well-being: A Study of Academic Staff at Three Colleges in New York Lei Jin and Tony Tam (Chinese University of Hong Kong): The COVID-19 Pandemic, Institutional Context and Socioeconomic Disparities in Well-being <i>Discussant:</i> Christian Suter (University of Neuchâtel)

15:30-16:00	Coffee Break (Foyer, level 2, 234 Queensberry St)
16:00-17:30	Session 3: The Pandemic, Mental Health, and Social Cohesion <i>Chair:</i> Pedro López-Roldán (Autonomous University of Barcelona) <i>Speakers:</i> Maria Angelika Tolentino Balungay (De La Salle University and University of Southern Mindanao) and Melissa Lopez Reyes (De La Salle University): In the Wake of the 2019 Earthquakes in Cotabato, Philippines: The Impact of the COVID-19 Pandemic on Survivor-Evacuees' Mental Health Ephraim Shapiro, Alean Al-Krenawi, Gil Zukerman, and Liat Korn (Ariel University): Mental Health and Care Utilization in Israel During the Period of COVID-19 (virtual presentation) Madga Borkowska (University of Essex), Renee Luthra (University of Essex), and James Laurence (Dublin Economic and Social Research Institute): Love My Neighbour When I Feel Good: Testing Reciprocal Relationship Between Perceived Neighbourhood Social Cohesion and Mental Health During Covid-19 Pandemic (virtual presentation) <i>Discussant:</i> Monica Budowski (University of Fribourg)
17:30-18:00	Coffee Break (Foyer, level 2, 234 Queensberry St)
18:00-19:30	Session 4: The Pandemic, Crisis Management and Policies, and their Impact (part 2) <i>Chair:</i> Jenny Chesters (University of Melbourne) <i>Speakers:</i> Dolgion Aldar (Independent Research Institute of Mongolia and UNDP Timor-Leste) and Manlaibaatar Zagdbazar (Economic Research Institute Mongolia): Comparative Assessment of the Impact of COVID-19 Pandemic Policy Measures on Small Business in Mongolia and Timor-Leste Ilán Bizberg (El Colegio de México): Political Control, Authority and the Pandemic (virtual presentation) Zhan Zhang (Universita della Svizzera Italiana, Lugano): Steering Into the Void? Understanding China's Changing COVID-19 Policy and the Reasoning Mechanism (virtual presentation) <i>Discussant:</i> Sandra Fachelli (Pablo de Olavide University)
20:00	Conference Dinner (University House)
Saturday, June 24, 2023	
08:45-09:30	Breakfast/Coffee/Tea (Foyer, level 2, 234 Queensberry St)
09:30-11:00	Session 5: Impact of the Pandemic on Children and Youth <i>Chair:</i> Christian Suter (University of Neuchâtel) <i>Speakers:</i> Oliver Nahkur (University of Tartu) and Karoline Zarina (Freelance Researcher, Estonia): Children's Profiles of Subjective Well-Being Change During the COVID-19 Pandemic and its Correlates: A Multi-National Study Gonzalo A. Saraví (Ciesas, Mexico): The Pandemic Effects on Sociability and Wellbeing of Low-Income Adolescents in Mexico Titik Harsanti (Politeknik Statistika STIS, Indonesia): Social Stressors Experienced by Students in the Online Learning Process During the COVID-19 Pandemic <i>Discussant:</i> Jenny Chesters (University of Melbourne)

11:00-11:30	Coffee Break (Foyer, level 2, 234 Queensberry St)
11:30-13:00	Session 6: The Impact of the Pandemic on Vulnerable and Marginalized Groups <i>Chair:</i> Monica Budowski (University of Fribourg) <i>Speakers:</i> Indera Ratna Irawati Pattinasarany (Universitas Indonesia): Has the COVID-19 Pandemic Reversed the Decline in NEET Youth Prevalence in Indonesia? Evidence from the 2018 and 2021 National Survey Data Shireen AlAzzawi (Santa Clara University, Santa Clara CA, US) and Vladimir Hlasny (UN ESCWA, Beirut): Youths' Employment Vulnerability amidst a Lingering Crisis: Evidence from the Middle East Fakhrul Alam (Shahjalal University of Science and Technology, Bangladesh): COVID-19 and Community-based Volunteerism: How the Rohingya Volunteers Acted for Community Engagement to Fight against the Pandemic in Rohingya Refugee Camps of Bangladesh <i>Discussant:</i> Christian Suter (University of Neuchâtel)
13:00-14:00	Lunch (Foyer, level 2, 234 Queensberry St)
14:00-15:30	Session 7: The Pandemic and Social Inequalities: Class, Race, Ethnicity, and Gender <i>Chair:</i> Masayuki Kanai (Senshu University) <i>Speakers:</i> Corey D. Fields (Georgetown University), Rahsaan Mahadeo (Providence College), Lisa Hummel (Stanford University), and Sara Moore (Stanford University): Inconvenience for Some and Disruption for Others: Race, Ethnicity, and US Talk of the COVID-19 Pandemic in Summer 2020 Chungse Jung (SUNY Cortland): Ethnonationalism or Asian Panethnicity: Korean Americans Responses to Anti-Asian Violence During the COVID-19 Pandemic María Cristina Bayón (Universidad Nacional Autónoma de México): Widening the Gaps in Times of Pandemic. Confinement, Public Space and Experiences of Inequality in Mexico City <i>Discussant:</i> Sandra Fachelli (Pablo de Olavide University)
15:30-16:00	Coffee Break (Foyer, level 2, 234 Queensberry St)
16:00-17:30	Session 8: The Pandemic, Health, Shift Work, and Addiction <i>Chair:</i> Jenny Chesters (University of Melbourne) <i>Speakers:</i> Teke Johnson Takwa (Central Bureau for Censuses and Population Studies Yaoundé): Effects of COVID-19 Pandemic on Access and Utilization of Reproductive Health Services in Some Health Units in Cameroon's Capital City, Yaoundé Regina Skiba (Jagiellonian University, Poland): Associations Between Work-related Changes Implemented in the Polish Garment Factory During Covid-19 Pandemic and Shift Worker's Health and Well-being Enrico di Bella (University of Genoa), Davide Valenzona (University of Genoa), Sonia Salvini (ALISA, Regione Liguria), Simona Tirasso (University of Genoa), and Luca Gandullia (University of Genoa): The Impact of the Covid-19 Pandemic on Pathological Gambling in Italy <i>Discussant:</i> Christian Suter (University of Neuchâtel)
18:00	Conference Dinner (Stovetop 108 Leicester St Carlton]

Conference Venue

Conference Location: University of Melbourne, Melbourne Graduate School of Education, 234 Queensberry St [Corner of Leicester St] Carlton – Kwong Lee Dow Building. Level 2 lecture theatre Q227. Universal access is available at the Leicester St entrance.

Accommodation: Essence Hotel Carlton, 609 Swanston St., Carlton VIC 3053 [22/6, 23/6, 24/6] (<https://www.essencehotels.com.au/carlton>)

Welcome Reception (Thursday, June 22, 2023, 18:00): Conference venue (Foyer, level 2, 234 Queensberry St).

Breakfast: Coffee, tea, fruit platters and pastries is served at the conference venue (Foyer, level 2, 234 Queensberry St).

Lunch: Lunch is served at the conference venue (Foyer, level 2, 234 Queensberry St).

Conference Dinners: Friday (June 23, 2023): University House, University of Melbourne.
Saturday (June 24, 2023): Stovetop, 108 Leicester St, Carlton.

Conference Organization

Organizing Conference Committee

Jenny Chesters

Melbourne Graduate School of Education, University of Melbourne
jenny.chesters@unimelb.edu.au

Sandra Fachelli

Pablo de Olavide University, Sevilla
sfachelli@upo.es

Christian Suter

Institute of Sociology, University of Neuchâtel
christian.suter@unine.ch

Ms Nadishka Weerasuriya

Melbourne Graduate School of Education, University of Melbourne
Weerasuriya.n@unimelb.edu.au

Conference Sponsorship

The conference is supported by the World Society Foundation (Zurich, Switzerland), the ISA Research Committee 55 on Social Indicators, and the Melbourne Graduate School of Education (University of Melbourne). For more information on the conference and for updates, please check at: <http://www.worldsociety.ch/>.

